



Diaphragm-Type Diaphragm Seal

Flanged Plastic Diaphragm Seal

Type L990.PF

Diaphragm Seals

Application

Protect pressure instrument from corrosive, contaminated or viscous media.

Design

Internal clamped diaphragm with threaded process connection; requires hydraulic fluid to transmit pressure to instrument

Process Connection

¼" to ½" NPT-female

Instrument Connection

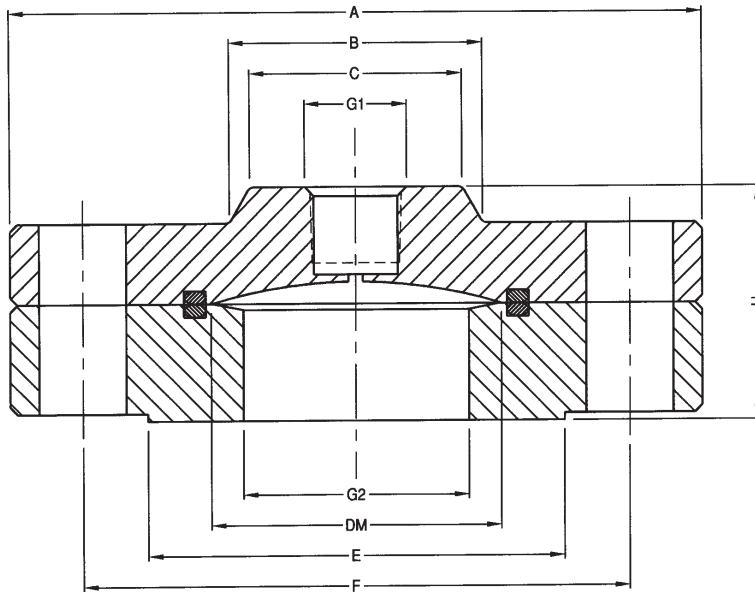
¼" NPT-female

Suitable Pressure Ranges (MWP 160 PSI @ 100°F)

15 PSI to 160 PSI (no vacuum or compound ranges)

Available Options (connections, materials, etc.)

See Selection Guide (over)



DM-EFFECTIVE DIAPHRAGM DIAMETER
CLASS=FLANGE RATING PER ASME B16.5
ALL DIMENSIONS IN INCHES UNLESS OTHERWISE NOTED

G1	G2/CLASS	A	B	C	DM	E	F	H
1/4NPT OR 1/2NPT FEMALE	1"150#	4.25	1.97	1.23	2.0	1.99	3.12	2.00
	2"150#	6.00	2.28	1.84	2.6	3.63	4.75	2.00

DWG.#2212021-5

To determine the effects of temperature and response time in a specific application, contact the factory for an **Application Questionnaire**. The information provided will allow WIKA Technical Support to accurately model your application parameters using state-of-the-art computer simulation techniques.

ACSL990.PF
(ACS 99.11F)

Selection Guide - 990.PF

990.PF, 1/2X1.0-150R, SS, PP, CS, KF, TF

Gasket Material
TF – Teflon®, white

Diaphragm Material
KF = Kel-F

Bolting Material
CS = Carbon steel, zinc-plated
SS = 300 series stainless steel

Lower Housing Material
PP = Polypropylene
PVDF = Polyvinylidene Fluoride (Kynar®)

Upper Housing Material
CS = Carbon steel, nickel-plated
SS = 316 stainless steel

Flange Rating
150R = 150# RF

Process Connection (per ASME B16.5)
1.0 = 1" pipe
2.0 = 2" pipe

Instrument Connection
1/4 = 1/4" NPT female
1/2 = 1/2" NPT female

Diaphragm Seal Design (See note 1)
990.PF = Flanged Type, Acid Seal

Notes

1. Maximum working pressure based on flange rating per ASME B16.5. (Max. 270 PSI)

*Items in **bold** are available from stock (subject to prior sales). For optional items, consult factory for current lead-time.*

Options not listed may be available, please consult factory.
Fill Fluid & Mounting options: Please reference data sheet ACS 99.MO

THE MEASURE OF
Total Performance™

Ordering Information:

State computer part number (if available) / type number / size / range / connection size and location / options required.

Specifications given in this price list represent the state of engineering at the time of printing. Modifications may take place and the specified materials may change without prior notice

05/01



WIKAI Instrument Corporation

1000 Wiegand Boulevard

Lawrenceville, Georgia 30043-5868

Tel: 770-513-8200 Fax: 770-338-5118

http://www.wika.com e-mail: chemseal@wika.com