

# UHP Flow-Through-Gauge Diaphragm Pressure Gauge, Nominal Size 2" Model 432.25 (FTG)

WIKA Data Sheet PM 04.12

## Applications

- Suitable for gaseous, liquid and corrosive media, also in a corrosive environment, for demanding high purity applications.
- Semiconductor and flat panel industry
- Gas distribution systems
- Medical gases
- Hook-up-application



## Special Features

- No dead volume in the pressure gauge
- Low internal volume for reducing particle generation and entrapment
- Helium leak tested, leak rate  $\leq 10^{-9}$  mbar · l/s
- Electropolished internals and case, internal surface finish  $R_a \leq 0,25 \mu\text{m}$
- All high purity connections available

UHP Flow-Through-Gauge, Model 432.25.2" (FTG)

## Description

### Nominal size

2"

### Accuracy class

Grade B according to ASME B40.1  
accuracy higher on request

### Scale ranges

-1 ... 4 bar / -30 inHg ... 60 psi  
-1 ... 9 bar / -30 inHg ... 130 psi

### Operating temperature

Ambient: -10 ... +60 °C  
Medium: +60 °C maximum

### Pressure connection

All UHP connections available

### Pressure element

Inconel

### Dial

White aluminium,  
with black/red lettering, dual pressure scale (bar/psi)

### Pointer

Black aluminium

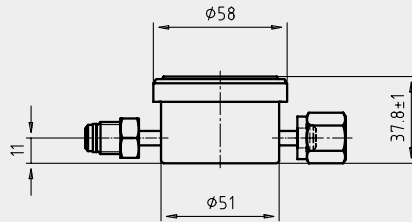
### Case

Material: stainless steel 316L, electropolished

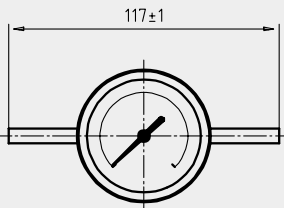
### Window

One piece polycarbonate screw-on

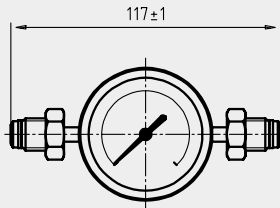
## Dimensions in mm



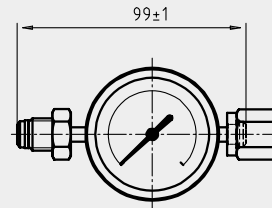
## Process connection



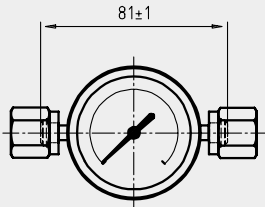
O.D. tube  
Order code: W4W4



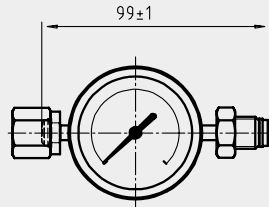
1/4" Face seal swivel male  
Order code: M4M4



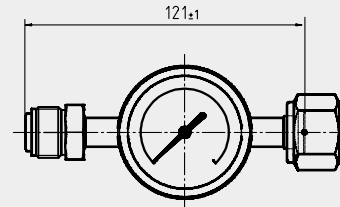
1/4" Face seal swivel male / Face seal swivel female  
Order code: M4F4



1/4" Face seal swivel female  
Order code: F4F4



1/4" Face seal swivel female / Face seal swivel male  
Order code: F4M4



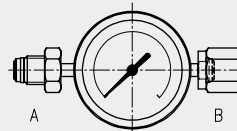
1/2" Face seal swivel male / Face seal swivel female  
Order code: M8F8

## Order code for scale ranges

Scale ranges	Order code
-1 ... 4 bar / -30 inHg ... 60 psi	S3B
-1 ... 9 bar / -30 inHg ... 130 psi	S4B

## Mounting position

Horizontal mounting



Order code: 1

Vertical mounting



Order code: 2

## Order code

Model	Process connection	Scale range	Mounting position
FTG	<input type="text"/>	- <input type="text"/>	- <input type="text"/>

Modifications may take place and materials specified may be replaced by others without prior notice.  
Specifications and dimensions given in this leaflet represent the state of engineering at the time of printing.

