

UHP Flow-Through-Gauge Diaphragm Pressure Gauge, Nominal Size 1 1/2” Type 432.25 - 1 1/2” Diameter

WIKA Datasheet 432.25B

Applications

- Suitable for gaseous, liquid and corrosive media, also in a corrosive environment, for demanding high purity applications.
- Semiconductor and flat panel industry
- Gas distribution systems
- Medical gases
- Hook-up application

Special Features

- No dead volume in the pressure gauge
- Low internal volume for reducing particle generation and entrapment
- Compact design
- Helium leak tested, leak rate $\leq 10^{-9}$ mbar · l/s
- Electropolished internals and case, internal surface finish Ra $\leq 0.25\mu\text{m}$

Standard Features

Sizes

1 1/2” (33 mm)

Accuracy class

Grade C according to ASME B40.100

Ranges

-30 inHg ... +60 psi

-30 inHg ... +130 psi

or other equivalent units of pressure or vacuum

Operating temperature

Ambient: -15°F ... 140°F (-10°C ... 60°C)

Media: 140°F (+60°C) maximum

Pressure connection

Fixed male 9/16-18 UNF



UHP Flow-Through-Gauge, Type 432.25 - 1 1/2”

Pressure element

Inconel

Dial

White aluminum with black lettering

Pointer

Black aluminum

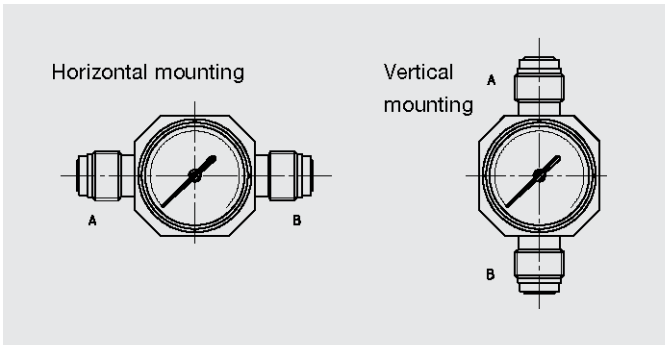
Case

316L SS, electro-polished

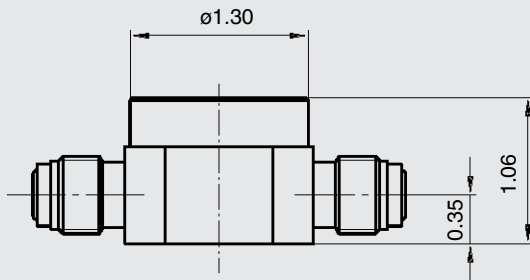
Window

One-piece polycarbonate

Mounting Position



Process connection- dimensions shown in ”



Fixed male 9/16-18 UNF

