

UHP Flow-Through-Gauge (FTG) Diaphragm Pressure Gauge, Nominal Size 1 1/8" Type 432.25

WIKA Datasheet 432.25A

Applications

- Suitable for gaseous, liquid and corrosive media, also in a corrosive environment, for demanding high purity applications.
- Semiconductor and flat panel industry
- Gas distribution systems
- Medical gases
- Hook-up application

Special features

- No dead volume in the pressure gauge
- Low internal volume for reducing particle generation and entrapment
- Compact design
- Helium leak tested, leak rate $\leq 10^{-9}$ mbar 1/s
- Electro-polished internals and case, internal surface finish $R_a \leq 0.25\mu\text{m}$



UHP Flow-Through-Gauge, Type 432.25 - 1 1/8"

Standard Features

Sizes

1 1/8" (28.5 mm)

Accuracy class

Grade C according to ASME B40.1

Ranges

-30 inHg ... 60 psi

-30 inHg ... 130 psi

Operating temperature

Ambient: -10°F... 140°F (-10°C ... 60°C)

Media: 140°F (+60°C) maximum

Pressure connection

Modular surface mount (MSM), C-seal

Pressure element

Material: Inconel

Dial

White aluminum with black lettering

Pointer

Black aluminum

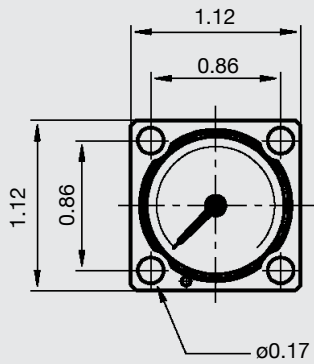
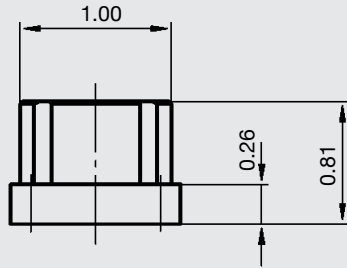
Case

316L stainless steel, electro-polished

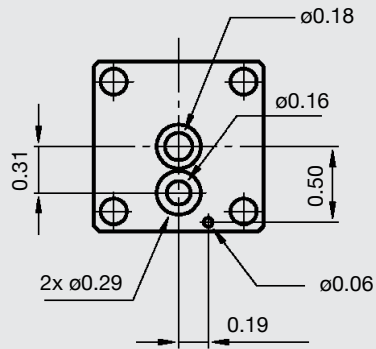
Window

One-piece polycarbonate

Dimensions shown in inches



Modular Surface Mount with C-seal



Ordering information

Pressure gauge model / Nominal size / Scale range / Size of connection / Optional extras required
 Specifications and dimensions given in this leaflet represent the state of engineering at the time of printing.
 Modifications may take place and materials specified may be replaced by others without prior notice.



WIKA Instrument Corporation

1000 Wiegand Boulevard
 Lawrenceville, GA 30043
 Tel (770) 513-8200 Toll-free 1-888-WIKA-USA
 Fax (770) 338-5118
 E-Mail info@wika.com
 www.wika.com