



Diaphragm-Type Diaphragm Seal

DN48 Pulp and Paper Diaphragm Seal

Type L990.23

Diaphragm Seals

Application

Process industry diaphragm seal to combine with Bourdon tube pressure gauges. Intended for corrosive, contaminated, hot or viscous pressure media.

Design

External flush diaphragm; designed to fit DN48 Pulp and Paper Industry connection; requires hydraulic fluid to transmit pressure to instrument

Process Connection

DN48

Instrument Connection

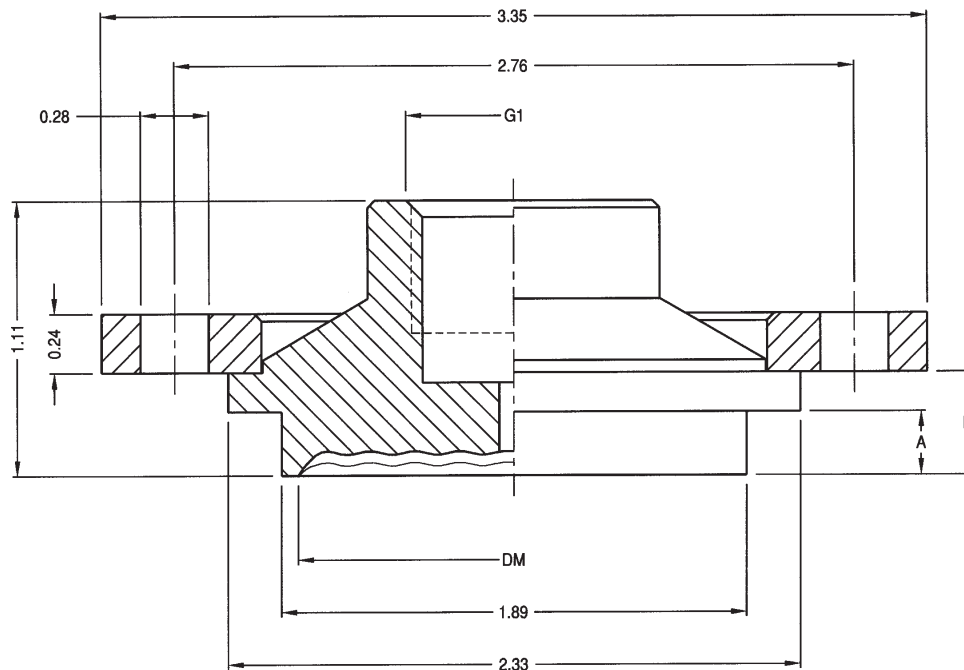
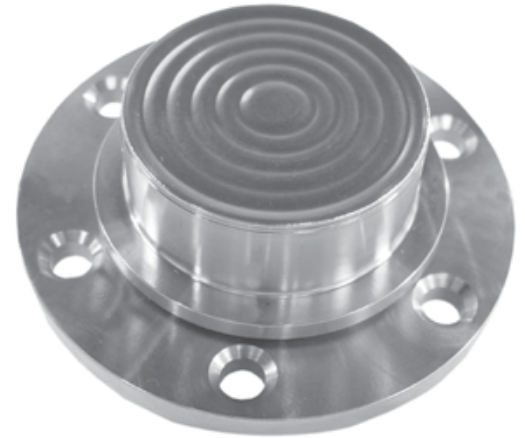
Capillary or 1/4" NPT-female

Suitable Pressure Ranges

15 PSI to 600 PSI

Available Options (connections, materials, etc.)

See Selection Guide (over)



G1: INSTRUMENT CONNECTION
DM: EFFECTIVE DIAPHRAGM DIAMETER
ALL DIMENSIONS IN INCHES UNLESS OTHERWISE NOTED

| G1 | A | B | DM |
|--------------------------|------|------|-----|
| 1/4"NPT OR 1/2"NPT | 0.26 | 0.41 | 1.8 |
| | 0.67 | 0.82 | |

DWG.#2212005-5

To determine the effects of temperature and response time in a specific application, contact the factory for an **Application Questionnaire**. The information provided will allow WIKA Technical Support to accurately model your application parameters using state-of-the-art computer simulation techniques.

ACS L990.23
(ACS 99.09)

Selection Guide - L990.23

L990.23,1/4XFL,SS,SS,26,SS

Retainer Flange Material

SS = 316 stainless steel
CS = Carbon steel, nickel-plated

Diaphragm Extension Length

26 = 0.26 in. (6.5 mm)
67 = 0.67 in. (17 mm)
XX = Other (define extension length on purchase order)

Diaphragm Material

SS = 316 stainless steel
MO = Monel® 400
HC = Hastelloy® C-276
PF = 316 stainless steel, Teflon® coated
EC = 316 stainless steel, ECTFE (Halar®) coated

Upper Housing and Extension Material

SS = 316 stainless steel
MO = Monel® 400
HC = Hastelloy® C-276
PF = 316 stainless steel, Teflon® coated (See note 1)
EC = 316 stainless steel, ECTFE (Halar®) coated (See note 1)

Process Connection

FL = Retainer flange

Instrument Connection

1/4 = 1/4" NPT female
1/2 = 1/2" NPT female
CPL = Capillary connection (To weld capillary directly to seal)

Diaphragm Seal Design

L990.23 = Pulp and Paper

Notes

1. 316 stainless steel upper housing with coated diaphragm extension.

*Items in **bold** are available from stock (subject to prior sales). For optional items, consult factory for current lead-time.*

Options not listed may be available, please consult factory.
Fill Fluid & Mounting options: Please reference data sheet ACS 99.MO.

THE MEASURE OF
Total Performance™

Ordering Information:

State computer part number (if available) / type number / size / range / connection size and location / options required.

Specifications given in this price list represent the state of engineering at the time of printing. Modifications may take place and the specified materials may change without prior notice

05/01



WIKAL Instrument Corporation

1000 Wiegand Boulevard

Lawrenceville, Georgia 30043-5868

Tel: 770-513-8200 Fax: 770-338-5118

http://www.wika.com e-mail: chemseal@wika.com